

- **COMMERCIAL AREAS**
  - **SHOPPING MALLS**
  - **HOSPITALS AND MEDICAL CENTRES**
  - **SCHOOLS**
  - **PETROL STATIONS**
  - **POLICE STATIONS**
  - **OTHERS**
- |  |  |   |   |  |
|--|--|---|---|--|
| <ul style="list-style-type: none"> <li>2.5 km Giant</li> <li>4.4 km AEON Big</li> <li>4.6 km Wangsa Walk</li> <li>4.9 km AEON</li> <li>8.1 km Ampang Point</li> <li>9.2 km Great Eastern Mall</li> <li>11.9 km KLCC</li> </ul> | <ul style="list-style-type: none"> <li>1.4 km SR Agama Muwafaqah</li> <li>2.1 km SMK Taman Melawati</li> <li>2.3 km Sri Inai School</li> <li>4.8 km Fairview International School</li> <li>5.3 km TAR College</li> <li>5.7 km Seri Utama School</li> <li>7.9 km Mutiara International School</li> <li>8.4 km ISKL</li> <li>9.9 km Sayfol International School</li> </ul> | <ul style="list-style-type: none"> <li>2.5 km Petronas</li> <li>3.1 km Petronas</li> <li>4.2 km Shell</li> <li>5.6 km Petronas</li> </ul> | <ul style="list-style-type: none"> <li>2.6 km Taman Melawati Police Station</li> <li>4.7 km Wangsa Link Police Station</li> <li>4.9 km Wangsa Maju Police Station</li> <li>6.4 km Hulu Kelang Police Station</li> <li>6.6 km Taman Melati Police Station</li> <li>7.9 km Gombak Police Station</li> </ul> | <ul style="list-style-type: none"> <li>4.6 km Zoo Negara</li> <li>7.1 km Sungai Ampang Waterfalls</li> </ul> |
|--|--|---|---|--|

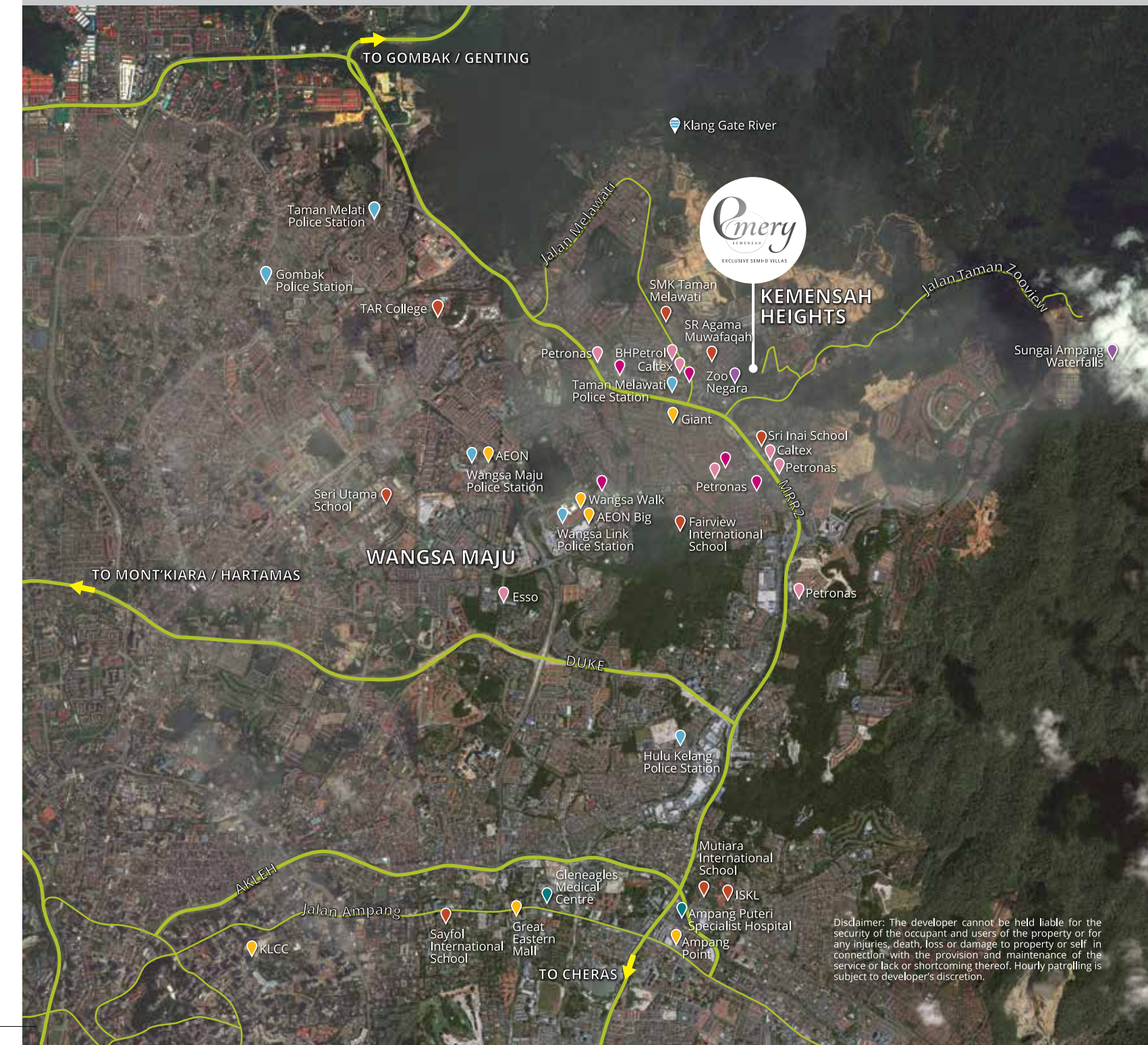


*Amazing clubhouse luxuries amid luxuriant tranquility.*

Not many people can luxuriate in an infinity pool amid lush forest tranquility. Fewer still can enjoy a stunning view of the city stretched infinitely before them. Clubhouse facilities abound, adding to the sense of contentment that is an everyday reality in this signature development.



Built-up is generous, ranging from 3,946 sq ft to 5,383 sq ft



Located on elevated land and completely surrounded by greenery, these low density semi-Ds are a result of organic architecture, fashioned by artisans who draw inspiration from nature.



"In the North sector of Embun at Kemensah Heights, there is a unique Kemensah Hill. Besides offering protective firm backing, its earth-shaped form is like a Treasure Bowl mountain, known to bring about great wealth, good health, stability, peace of mind, and career and academic excellence to all family members living nearby. Such a mountain is particularly desired because it enriches the wealth and career of the residents here, helping them to accumulate greater wealth and savings!"

*By renowned geomancy Master Kenny Ho.  
Winner of International TOP-10 Quality Enterprise Award and  
Winner of International TOP-10 Quality Professional, Talent, Elite Award.*

Disclaimer: The developer cannot be held liable for the security of the occupant and users of the property or for any injuries, death, loss or damage to property or self, in connection with the provision and maintenance of the service or lack or shortcoming thereof. Hourly patrolling is subject to developer's discretion.

