



METROPOLITAN LIFESTYLE
ON THE BANKS OF THE
'RIVER OF LIFE'

RIVERA CITY
- KL SENTRAL -

ICONIC LANDMARK

Connected to 2 rail stations.
Direct Access to the Federal Highway
(Future Link Bridge).

No more crazy commutes and frustrating hours in traffic. At The Riv @ Riveria City, you are at the epicentre of Kuala Lumpur's modern public transportation hub. You are mere minutes' walk away from KL Sentral with links to the airports, railway lines, commuter trains and LRT. A covered walkway from Riveria City to the Tun Sambanthan Monorail Station and a direct access (Future Link Bridge) from Jalan Syed Putra (Federal Highway) leading to Riveria City.



300M

to KL Sentral Transportation Hub

Easy access to rail links that connects to the city, airport and all over Malaysia.



DIRECT ACCESS

**from Federal Highway
(Future Link Bridge)**

Seamless connection via Jalan Syed Putra.



100M

to Tun Sambanthan Monorail Station

Direct link to the financial and business hubs in the city.





1 MONORAIL LINE



EFFORTLESS METROPOLITAN LIFESTYLE

Sitting on the riverbank.
Everything you need is here.

The Riv @ Riveria City is strategically mere minutes away from KL Sentral, an integrated public transportation hub with direct links to the rest of the city and the airports.

Whether you are a busy professional or a laidback millennial or anyone else, the wide spectrum of well-designed lifestyle office spaces ranging from 250 to 486 sf, will meet your needs. Designed with functional and flexible layout, and illuminated with natural lighting, the spaces will also appeal to your aesthetic sense.



Sits on the bank of River of Life

** Artist's Impression Only*



Sky Garden

FRESH STYLE, MODERN SPACES

**784 units of office suites and SOHO.
Built-up ranging from 250sf to 486sf.**

Experience living in the sky at The Riv @ Riveria City with sky garden to catch the city's most panoramic views, as well as recreational facilities such as swimming pool, jacuzzi, gazebo and gymnasium with unique outdoor features that triggers the senses. Other notable facilities include river walkways and full security coverage while being in The Riv @ Riveria City.



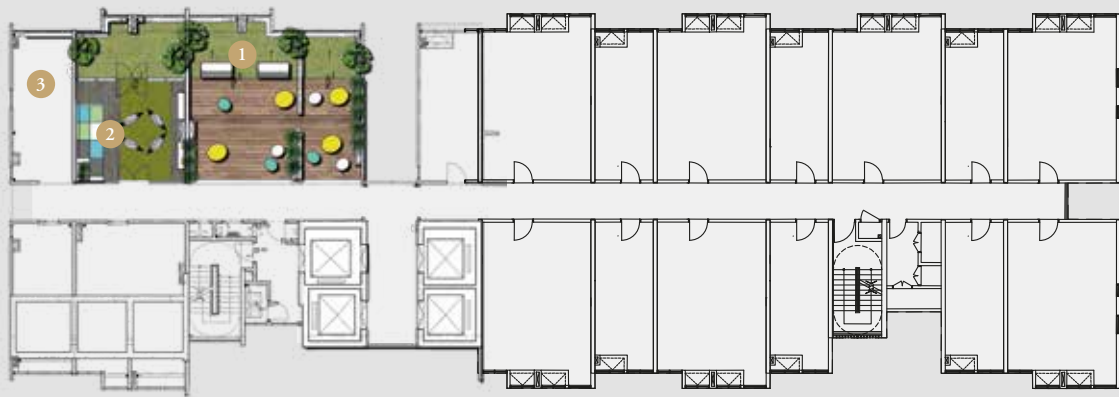
Business Lounge



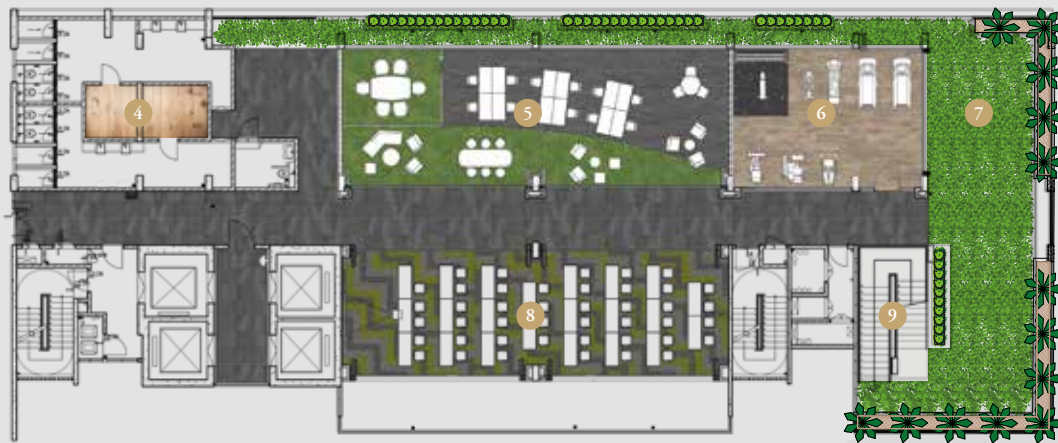
Panoramic View from Sky Garden at Level 30

** Artist's Impression Only*

LEVEL 30 SKY GARDEN



LEVEL 53 FACILITIES FLOOR



LEVEL 54 FACILITIES FLOOR



- | | | |
|------------------------------|---|---|
| 1 Sky Garden (Double Volume) | 6 Gymnasium | 10 Gazebo |
| 2 Reading Room | 7 Outdoor Gymnasium | 11 Infinity Pool with Transparent Strips (Bottom) |
| 3 Laundry Area | 8 Multi Purpose Hall | 12 Jacuzzi |
| 4 Changing Room with Sauna | 9 Staircase to Swimming Pool @ Level 54 | 13 Sunken Lounge |
| 5 Business Lounge | | |

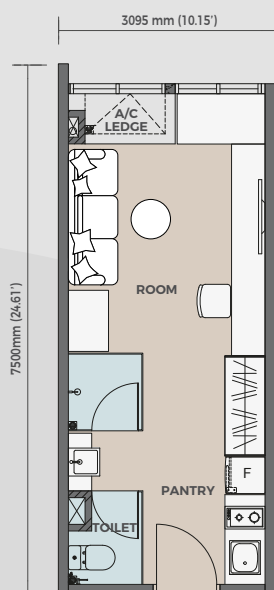


FLEXIBILITY CONCEPT

OFFER
FLEXIBILITY AND
PRIVACY

SUITE A

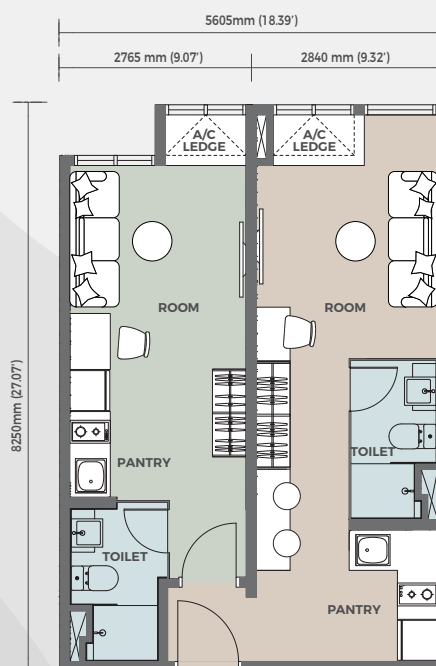
250 sq. ft.



SUITE B

486 sq. ft.

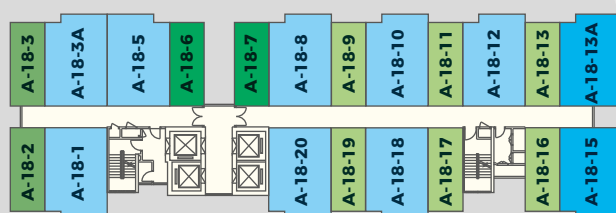
(DUAL KEY)



| | | |
|--|-----------------|-----------|
| | Suite A | 250 SQ FT |
| | Suite A1 | 250 SQ FT |
| | Suite A2 | 250 SQ FT |

| | | |
|--|-----------------|-----------|
| | Suite B | 486 SQ FT |
| | Suite B1 | 486 SQ FT |

TYPICAL STOREY PLAN



SPECIFICATION

| | |
|------------------|--|
| Structure | : Reinforced Concrete Framework |
| Wall | : Concrete Wall / Masonry Wall / Glass Panel (toilet) / Dry Wall |
| Roof | : Reinforced Concrete Flat Roof |
| Ceiling | : Plaster Ceiling |
| Windows | : Aluminium Frame Glass Windows |

| | | |
|-----------------------|--------------------|----------------------------------|
| Doors | : Entrance | - Fire Rated Door |
| | : Others | - Timber Flush Door / Glass Door |
| Ironmongery | : Quality Locksets | |
| Wall Finishes | : Internal Wall | - Emulsion Paint |
| | : External Wall | - Weather Paint |
| | : Toilet | - Tiles |
| Floor Finishes | : Office / Toilet | - Vinyl / Tiles |
| | : Air Cond Ledge | - Cement Render |

| Sanitary Installation | Items | Type A / A1 / A2 | Type B / B1 |
|-----------------------|---------------------|------------------|-------------|
| | Water Closet | 1 | 2 |
| | Wash Basin | 1 | 2 |
| | Toilet Roll Holder | 1 | 2 |
| | Shower Head | 1 | 2 |
| | Tap | 1 | 2 |
| | Pantry Sink and Tap | 1 | 2 |

| Electrical Installation | Items | Type A / A1 / A2 | Type B / B1 |
|-------------------------|--------------------------------|------------------|-------------|
| | Electrical Distribution Board | 1 | 1 |
| | Lighting Point | 4 | 8 |
| | Ceiling Fan Point c/w Fan Hook | 1 | 2 |
| | 15A Socket Outlet Point | 1 | 2 |
| | Water Heater Point | 1 | 2 |
| | 13A Switch Socket Outlet | 5 | 10 |
| | Air Cond Point | 1 | 2 |
| | Fiber Wall Socket Outlet | 1 | 2 |

SAFEGUARDING YOUR PEACE-OF-MIND

Have a peace of mind at The Riv's suites with a safe and secure environment through the controlled entry using card access, multi-tiered security system and 24/7 guard service and patrols.



24-hour Guarded



MULTI-TIER SECURITY SYSTEMS



MAIN ENTRANCE

- Key Access Card
- CCTV Surveillance
- Barrier Gate



CARPARK

- CCTV Surveillance



LIFT LOBBY

- Key Access Card
- CCTV Surveillance



LIFT ACCESS (To dedicated floor)

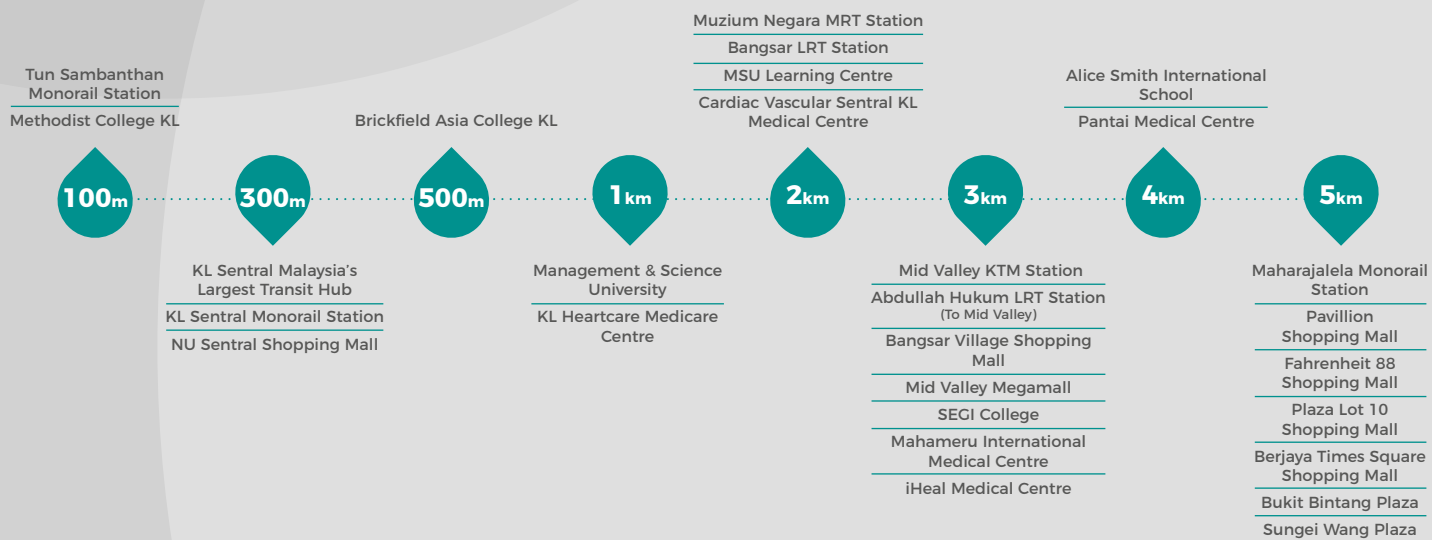
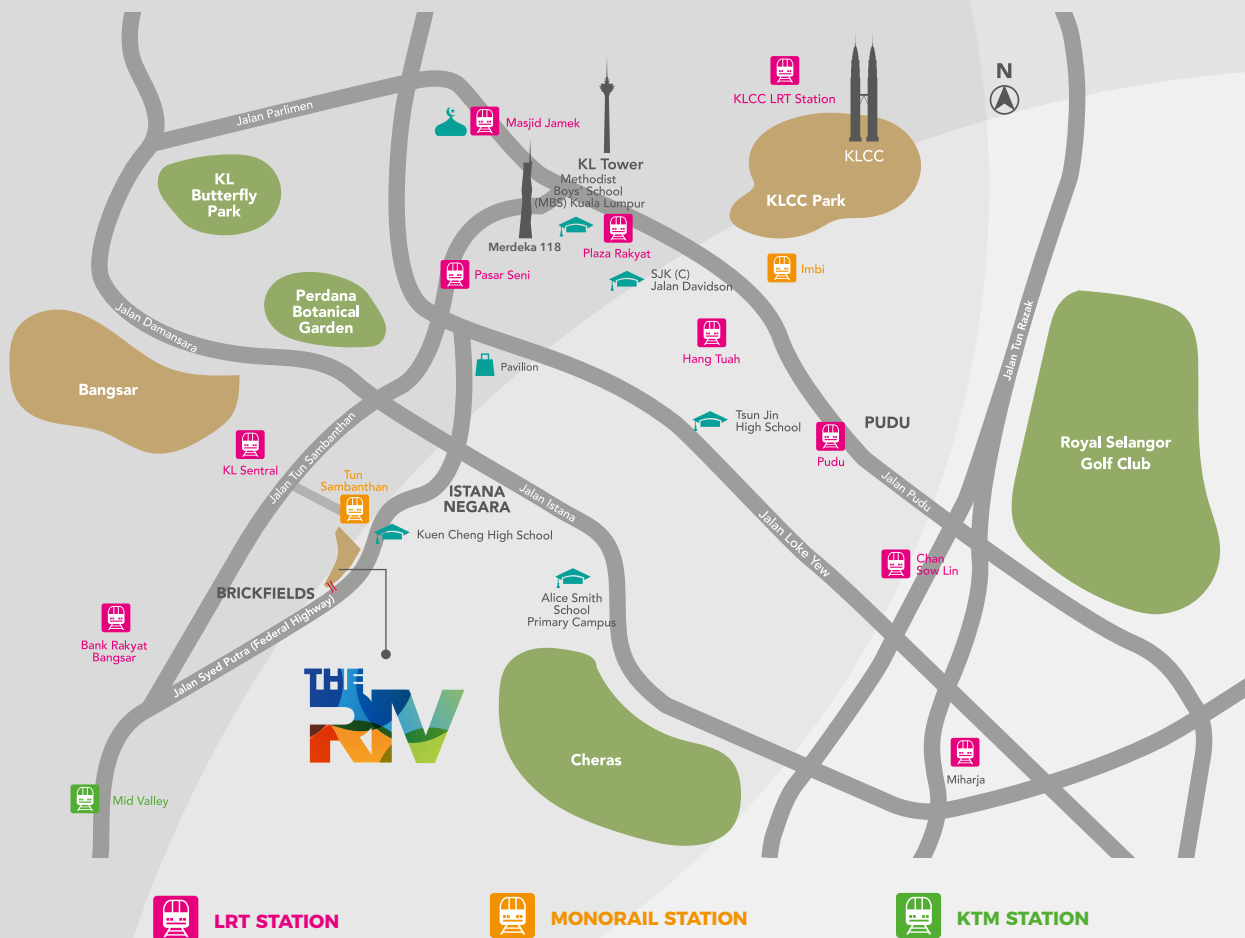
- Key Access Card
- CCTV Surveillance



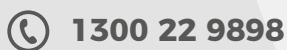
FACILITY FLOOR

- Key Access Card

LOCATION MAP



A joint development by



DISCLAIMER : All information contained herein is subject to changes without notification as may be required by the relevant authorities and cannot form part of an offer or contract. Whilst every care has been taken in providing this information, the owner, developer and managers cannot be held liable for variations. All illustrations and pictures are artist impressions only. The items are subject to variation, modifications and substitutions as may be recommended by the relevant approving authorities.